



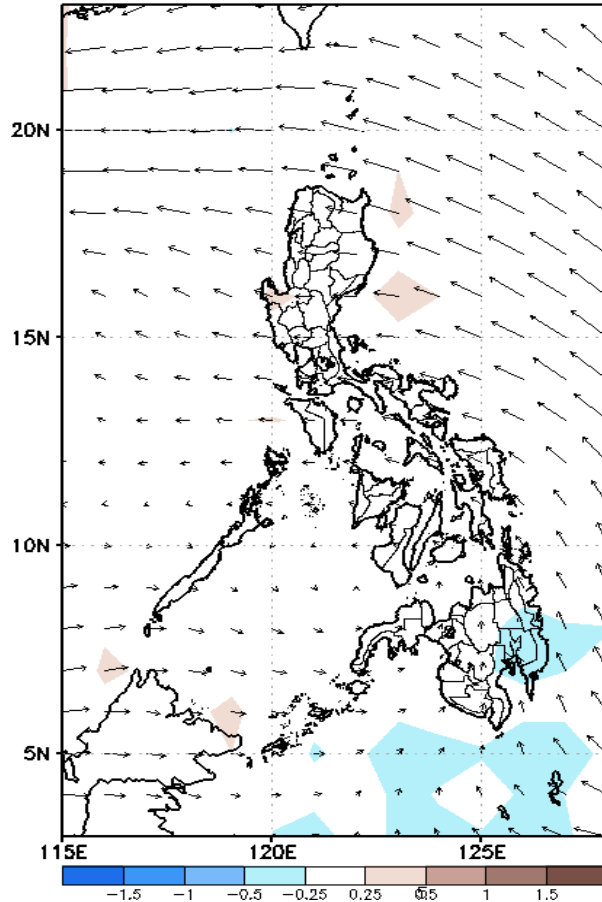
# Week 1 & Week 2 Forecast for the Philippines using GEFS Model



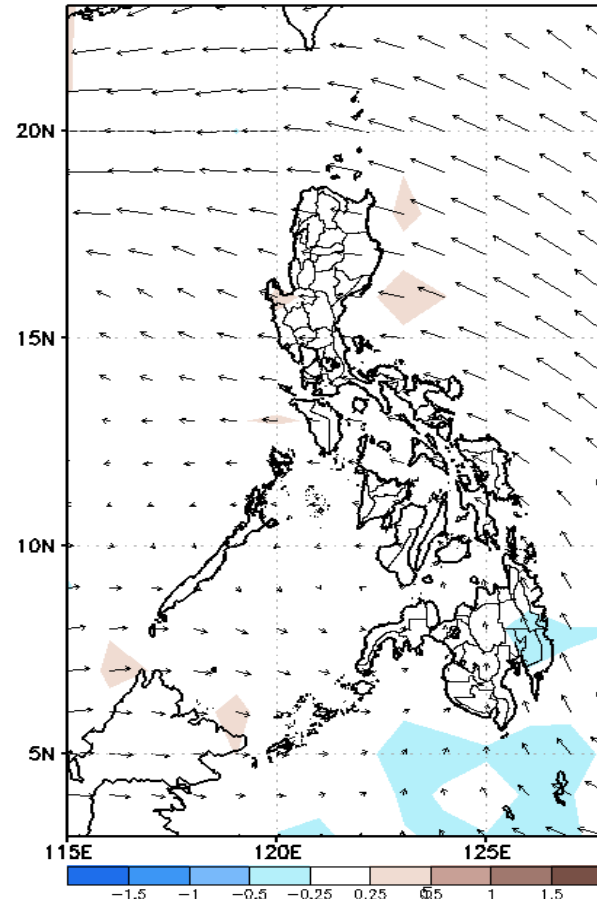
# GEFS Week-1 Forecasts: Divergence & Wind Anomaly

Week 1: Sep 06-12, 2021

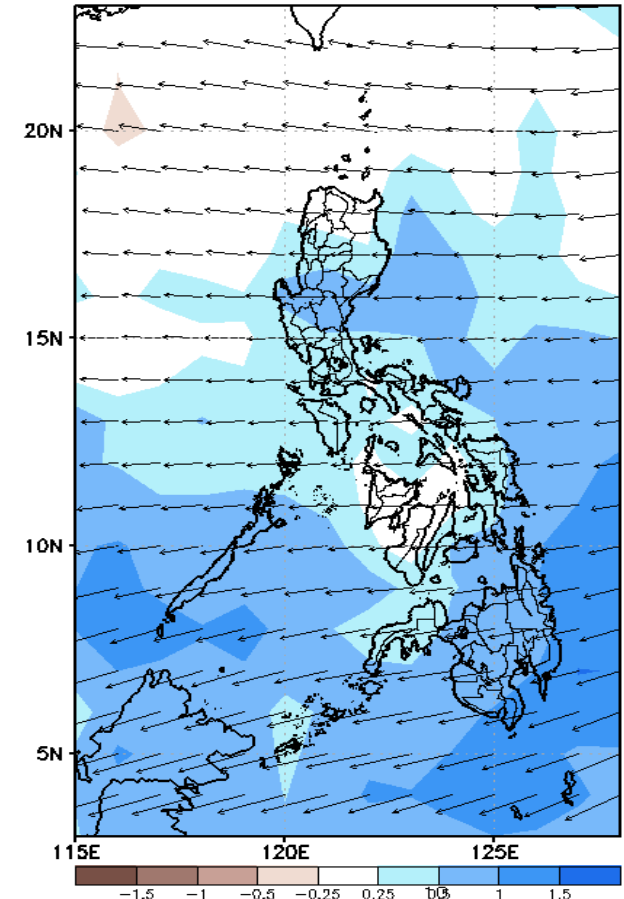
GEFS Week-1 850-hPa Divergence and Wind Anom  
Valid: 20210906 - 20210912



GEFS Week-1 700-hPa Divergence and Wind Anom  
Valid: 20210906 - 20210912



GEFS Week-1 200-hPa Divergence and Wind Anom  
Valid: 20210906 - 20210912

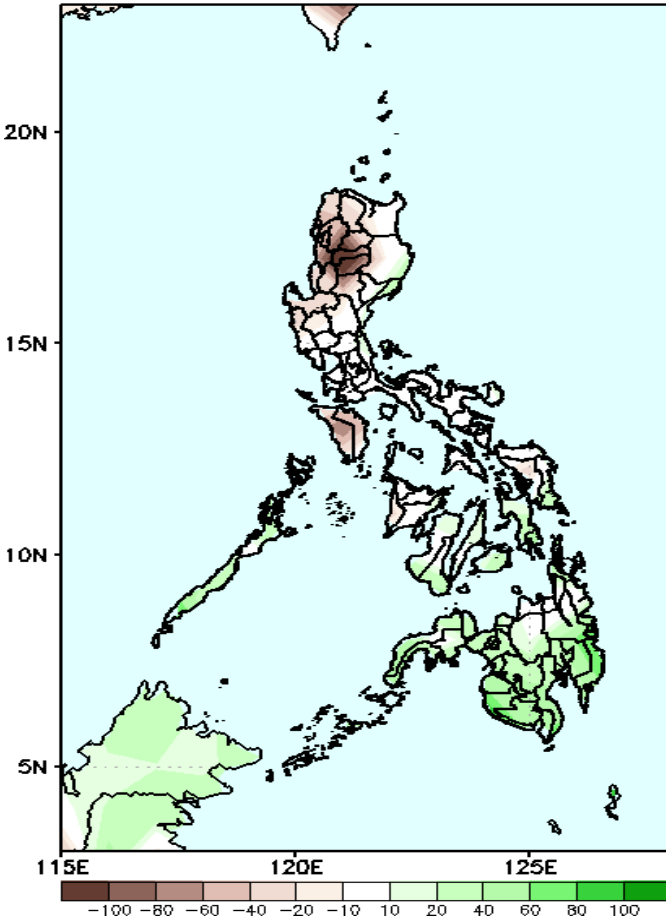


Upper and low level Divergence suggest likelihood of precipitation in most parts of the country. Southwest monsoon affecting the western section of the country while Easterlies affecting the remaining parts of the country attributing to light and moderate rains due to thunderstorms during the forecast period.

# Precipitation Anomaly and Exceedance Probability > 25/50 mm

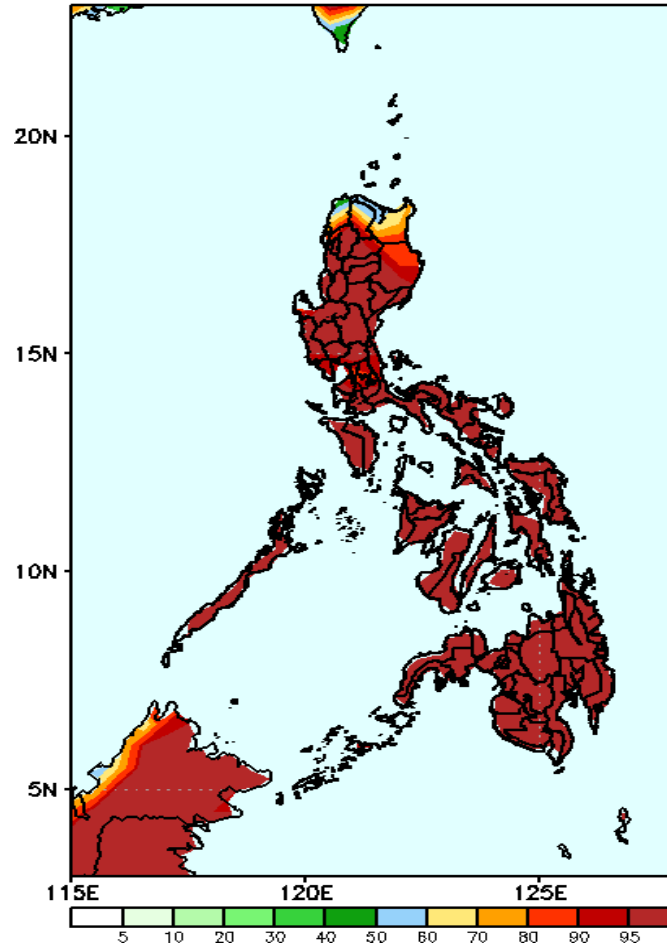
Week 1: Sep 06-12, 2021

GEFS Week-1 Precip Anomaly  
Valid: 20210906 - 20210912



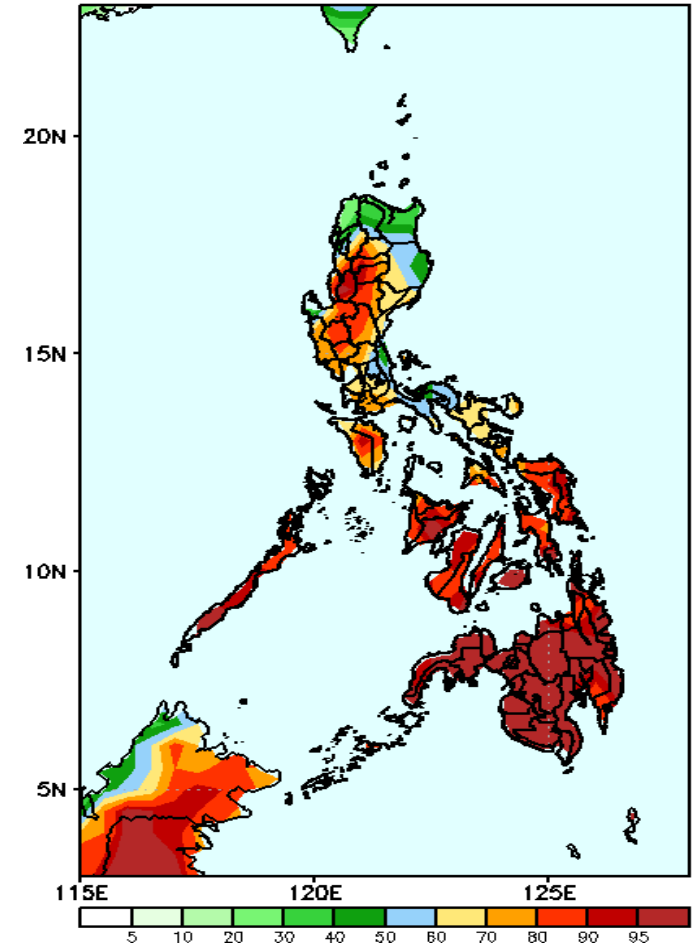
Rainfall deficit of 60-100mm is expected in Ilocos & Cordillera Region and Mindoro while increase of rainfall of 40-100mm in most parts of Mindanao during the forecast period.

GEFS Week-1 Exceedance Prob. > 25mm  
Valid: 20210906 - 20210912



High probability of rainfall to exceed 25mm in most parts of the country is expected during the forecast period.

GEFS Week-1 Exceedance Prob. > 50mm  
Valid: 20210906 - 20210912

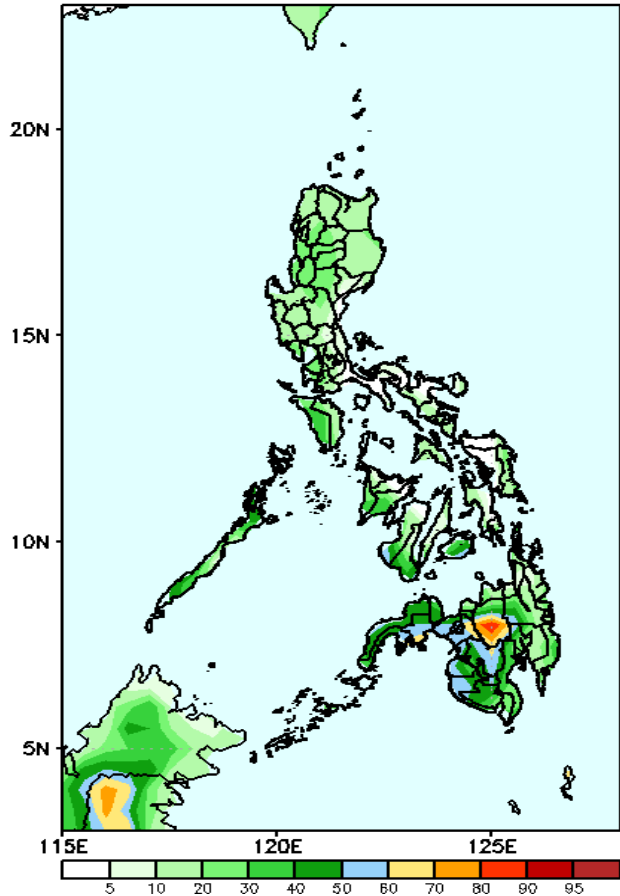


High probability of rainfall to exceed 50mm in most parts of the country except in Ilocos Norte, Apayao and Cagayan during the forecast period.

# Exceedance Probability > 100/150/200 mm

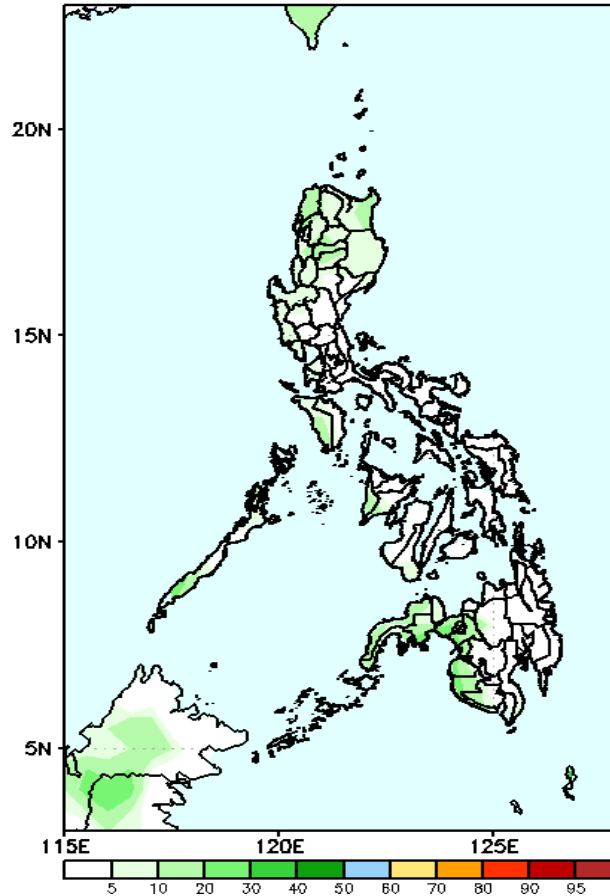
## Week 1: Sep 06-12, 2021

GEFS Week-1 Exceedance Prob. > 100mm  
Valid: 20210906 - 20210912



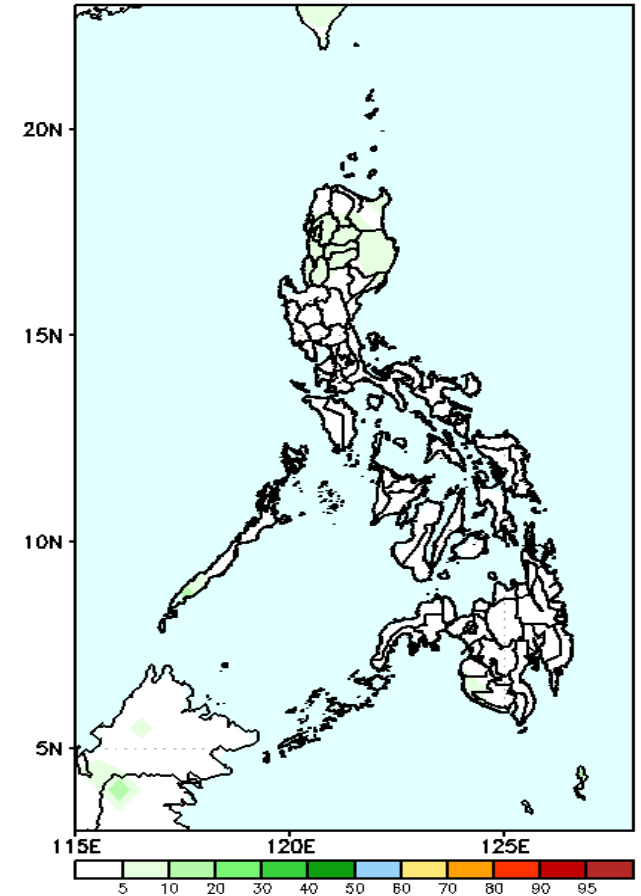
Less probability of rainfall to exceed 100mm in most parts of the country is expected except in Bukidnon where there is 60-90% chance during the forecast period.

GEFS Week-1 Exceedance Prob. > 150mm  
Valid: 20210906 - 20210912



Less probability of rainfall to exceed 150mm in most parts of the country is expected during the forecast period.

GEFS Week-1 Exceedance Prob. > 200mm  
Valid: 20210906 - 20210912



Less probability of rainfall to exceed 200mm in most parts of the country is expected during the forecast period.

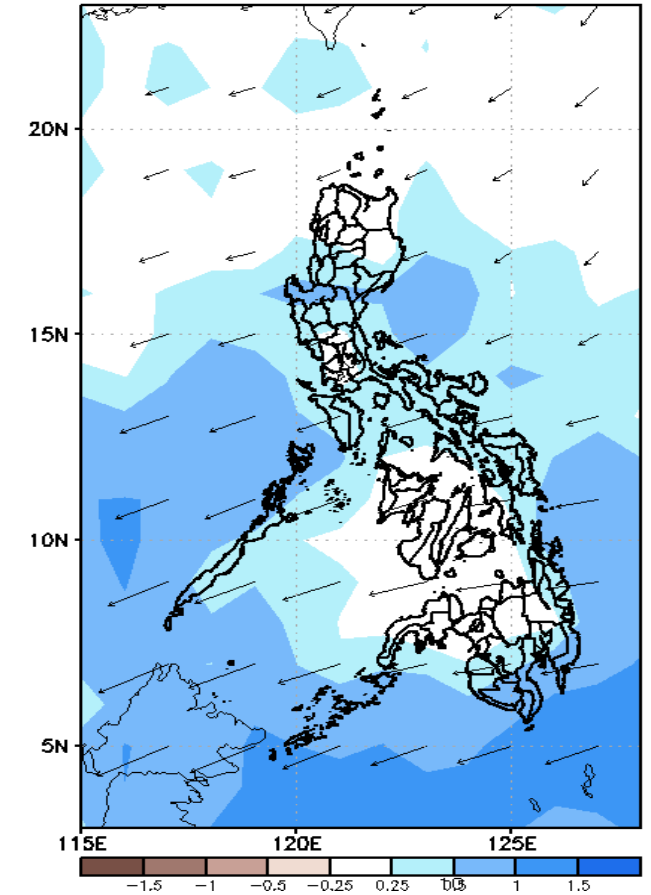
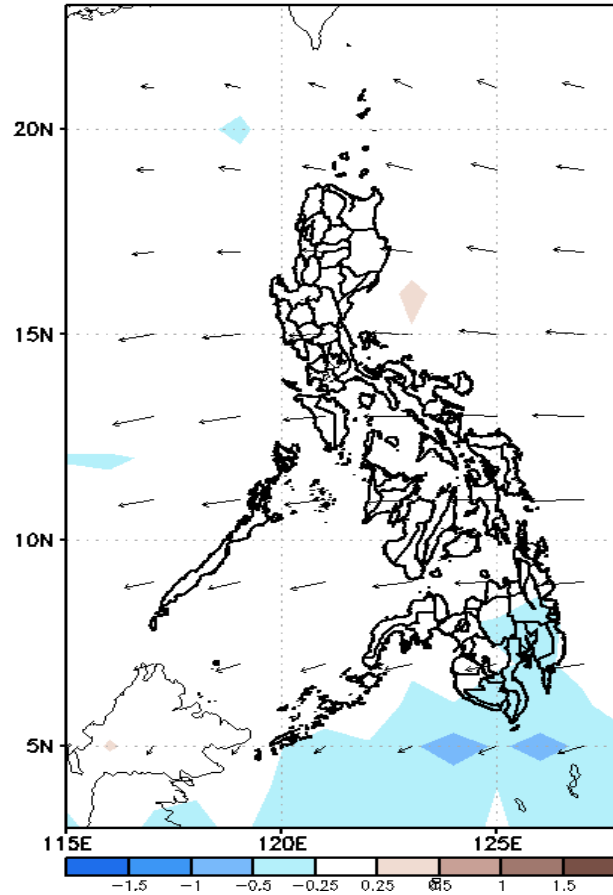
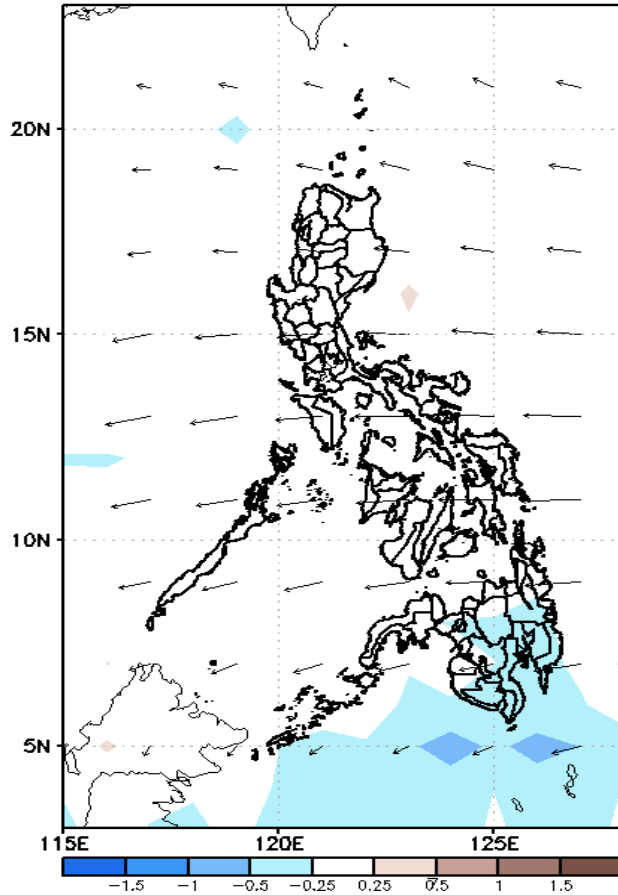
# GEFS Week-2 Forecasts: Divergence & Wind Anomaly

Week 2: Sep 13-19, 2021

GEFS Week-2 850-hPa Divergence and Wind Anom  
Valid: 20210913 - 20210919

GEFS Week-2 700-hPa Divergence and Wind Anom  
Valid: 20210913 - 20210919

GEFS week-2 200-hPa Divergence and Wind Anom  
Valid: 20210913 - 20210919

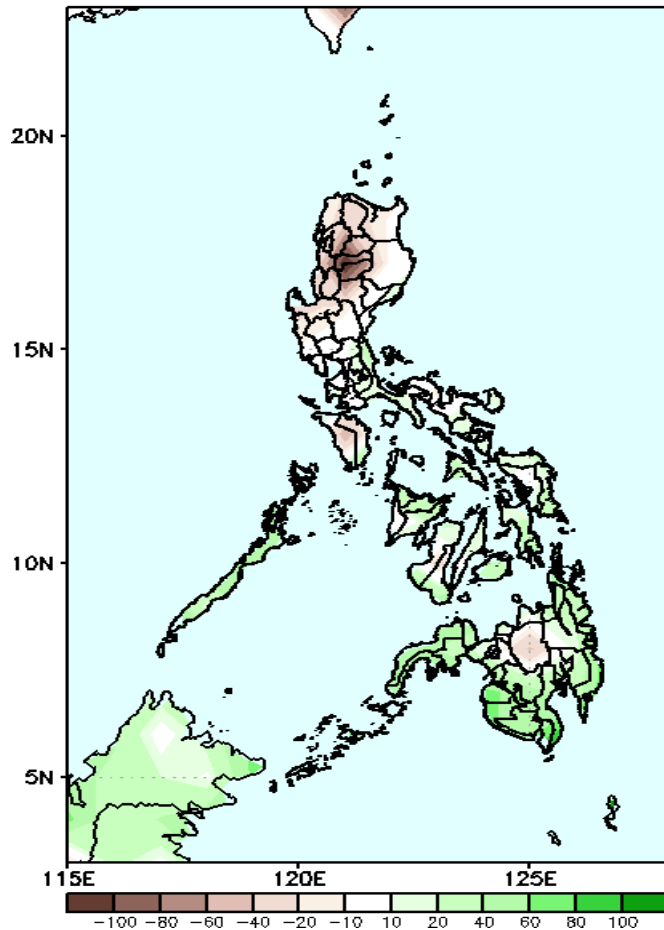


Upper and low level Divergence suggest likelihood of precipitation in most parts of the country except Ilocos Norte, Apayao, Cagayan, Extreme Northern Luzon, Western and Central Visayas and Northern Mindanao. Easterlies affecting the eastern section of the country attributing to light o moderate rains due to thunderstorms during the forecast period.

# Precipitation Anomaly and Exceedance Probability > 25/50 mm

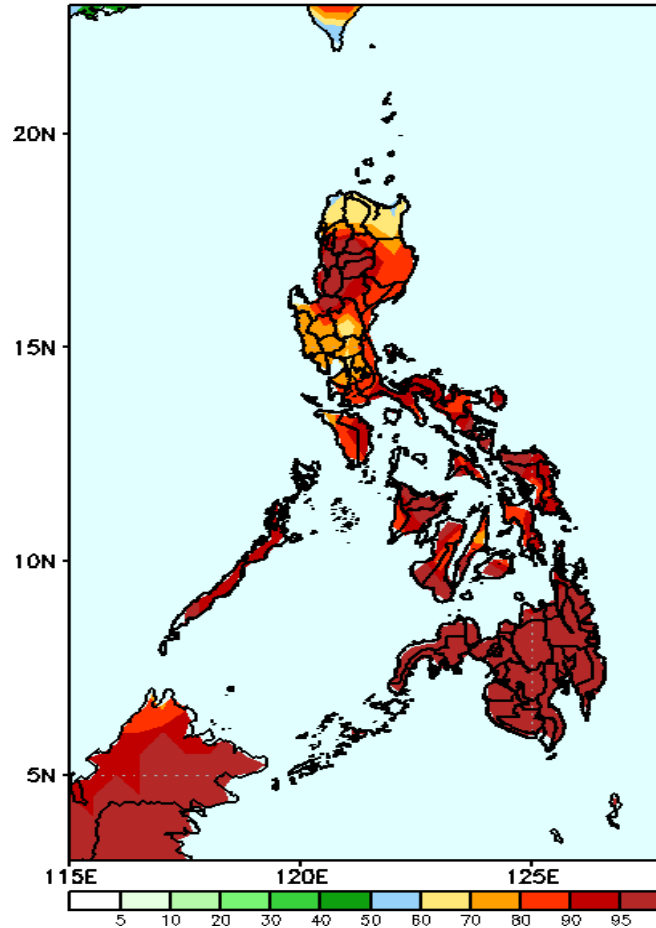
## Week 2: Sep 13-19, 2021

GEFS Week-2 Precip Anomaly  
Valid: 20210913 - 20210919



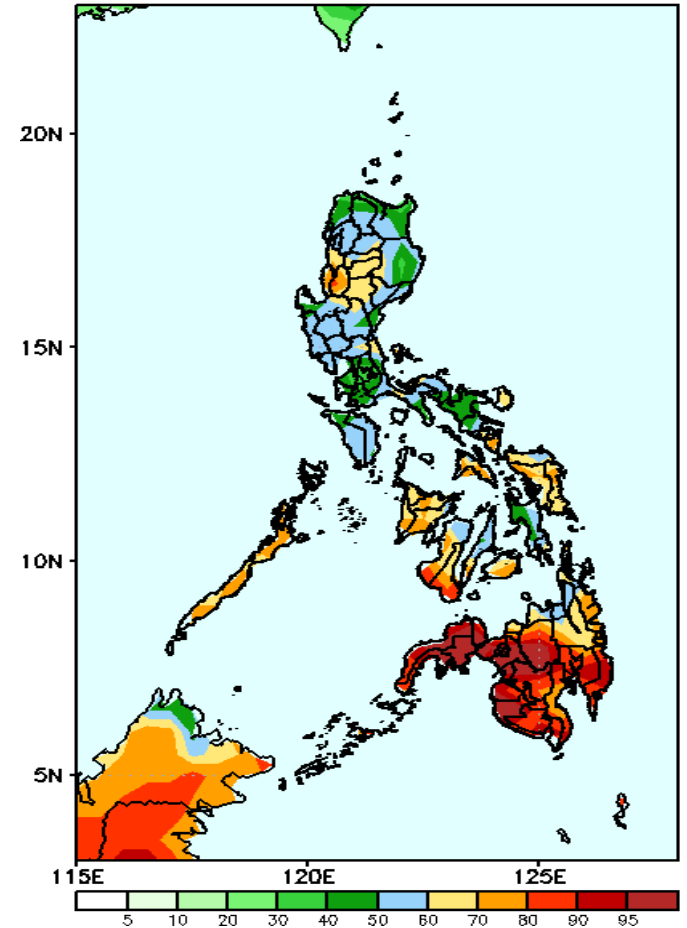
Increase of rainfall of 60-100mm is expected in most parts of Visayas and Mindanao while 40-100mm rainfall deficit in Luzon during the forecast period.

GEFS Week-2 Exceedance Prob. > 25mm  
Valid: 20210913 - 20210919



High probability of rainfall to exceed 25mm in most parts of the country is expected during the forecast period

GEFS Week-2 Exceedance Prob. > 50mm  
Valid: 20210913 - 20210919

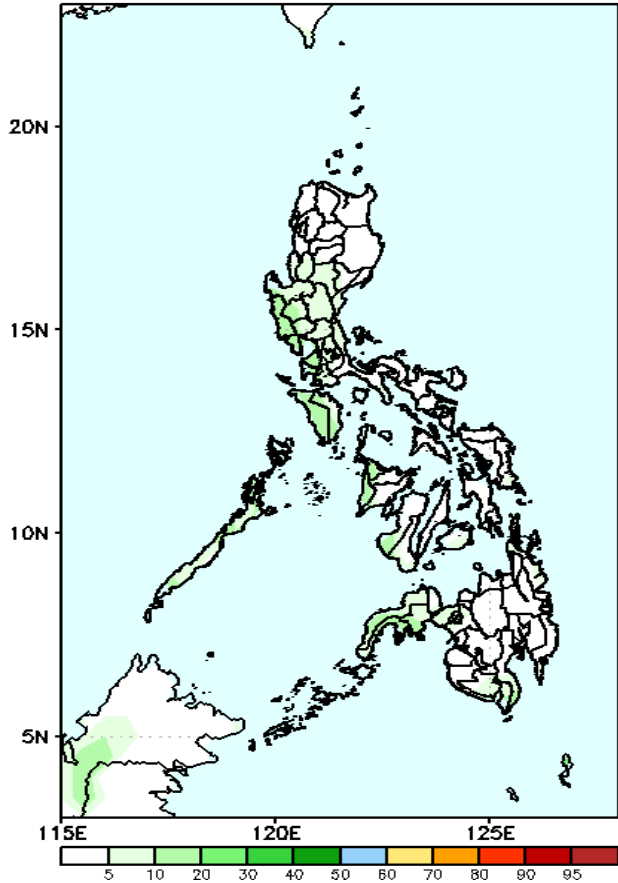


High probability of rainfall to exceed 50mm in Abra, La Union and most parts of Visayas and Mindanao while less likely for the rest of Luzon during the forecast period.

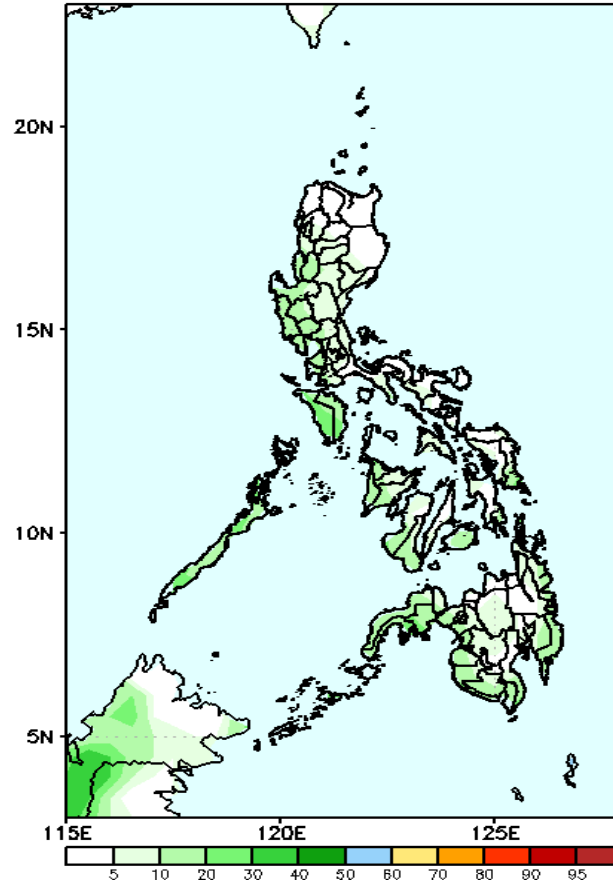
# Exceedance Probability > 100/150/200 mm

## Week 2: Sep 13-19, 2021

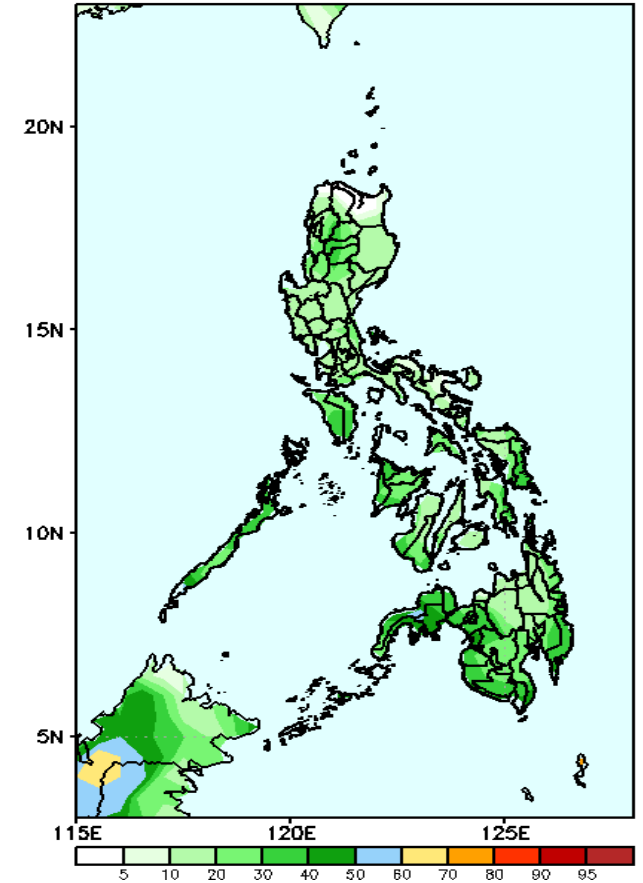
GEFS Week-2 Exceedance Prob. > 200mm  
Valid: 20210913 - 20210919



GEFS Week-2 Exceedance Prob. > 150mm  
Valid: 20210913 - 20210919



GEFS Week-2 Exceedance Prob. > 100mm  
Valid: 20210913 - 20210919



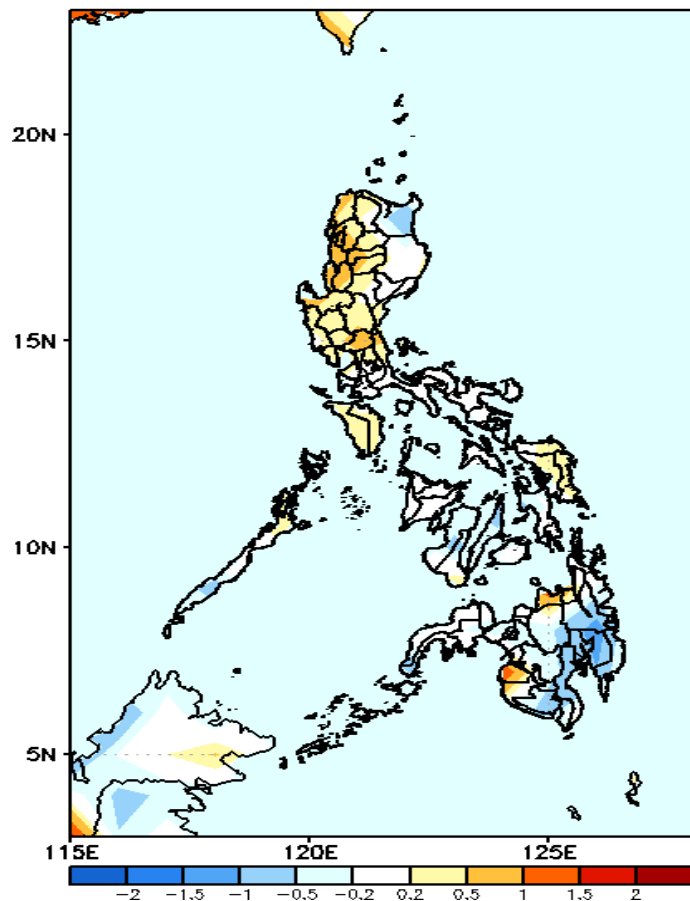
Less probability of rainfall to exceed 100mm in most parts of the country is expected during the forecast period.

Less probability of rainfall to exceed 150mm in most parts of the country is expected during the forecast period.

Less probability of rainfall to exceed 200mm in most parts of the country is expected during the forecast period.

# GEFS Week-1 & 2 Forecasts: T2m Anomaly

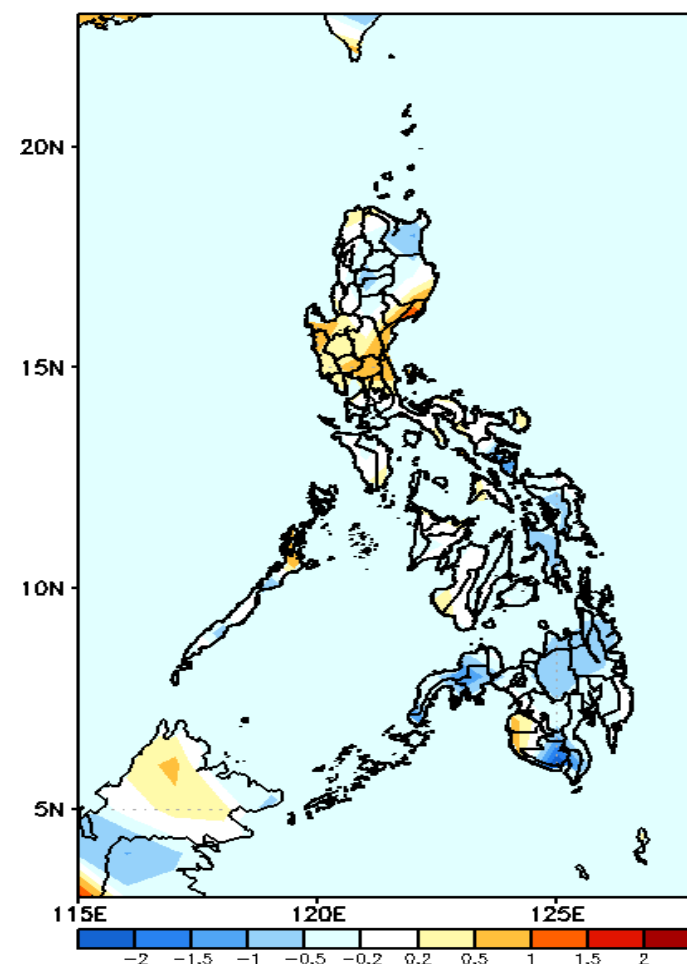
GEFS Week-1 T2m Anomaly  
Valid: 20210906 - 20210912



## 2m Temperature Week 1: Sep 06-12, 2021

Average to slightly warmer average than average surface air temperature will likely experience in most parts of Luzon, Eastern Visayas, Misamis Oriental and Maguindanao while slightly cooler than average surface air temperature is expected in eastern & southern Mindanao.

GEFS Week-2 T2m Anomaly  
Valid: 20210913 - 20210919



## 2m Temperature Week 2: Sep 13-19, 2021

Slightly cooler to cooler than average surface air temperature will likely experience in most parts of eastern Visayas and Mindanao while slightly warmer to warmer than average temperature is expected in Central Luzon, Maguindanao & Sultan Kudarat.